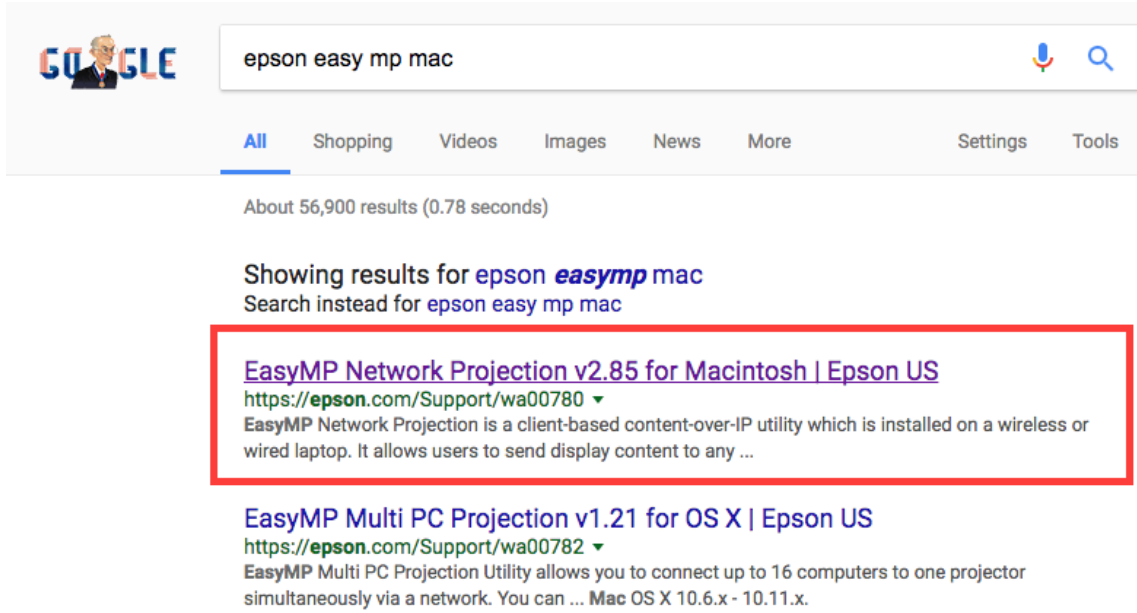
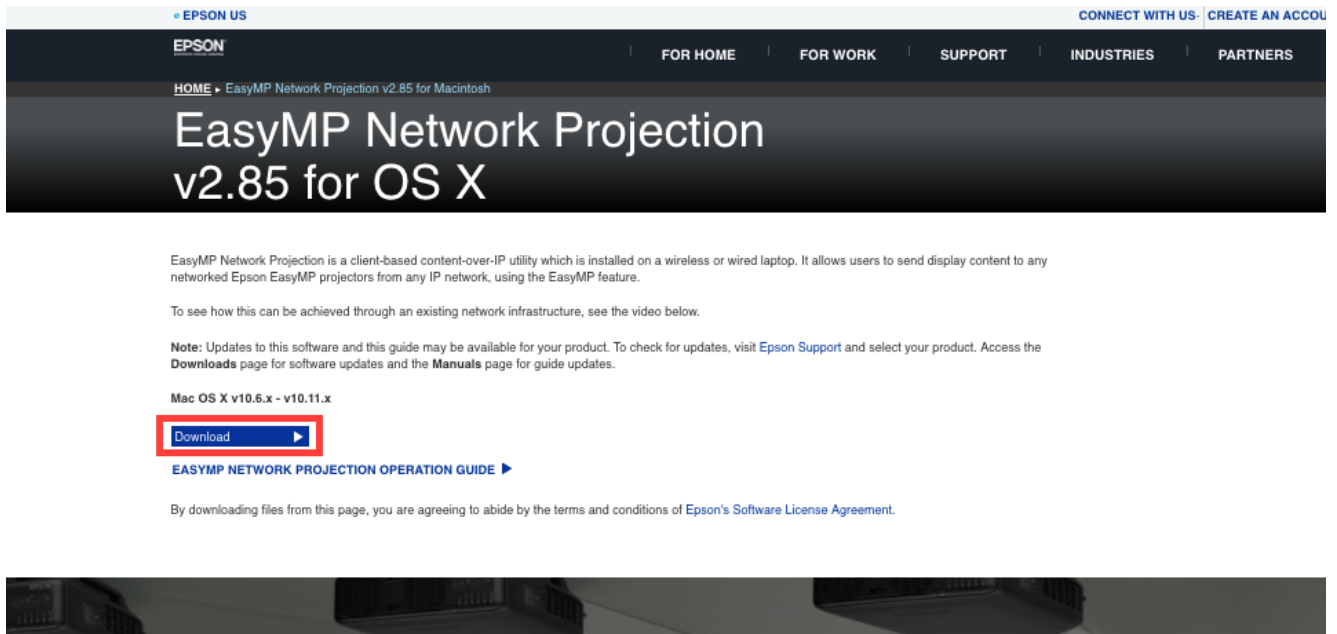


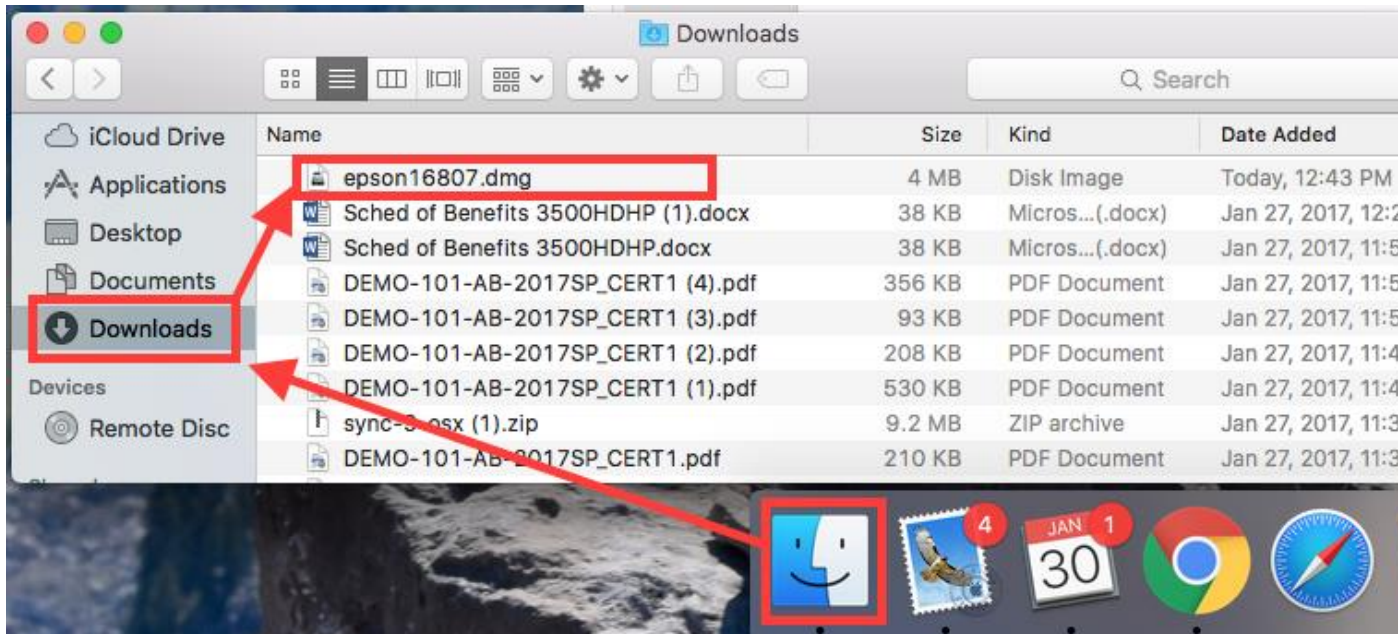
1. Search Google for “Epson Easy MP Mac,” choose “EasyMP Network Projection...” in the search results.



2. Scroll down and choose “download” in the windows section:



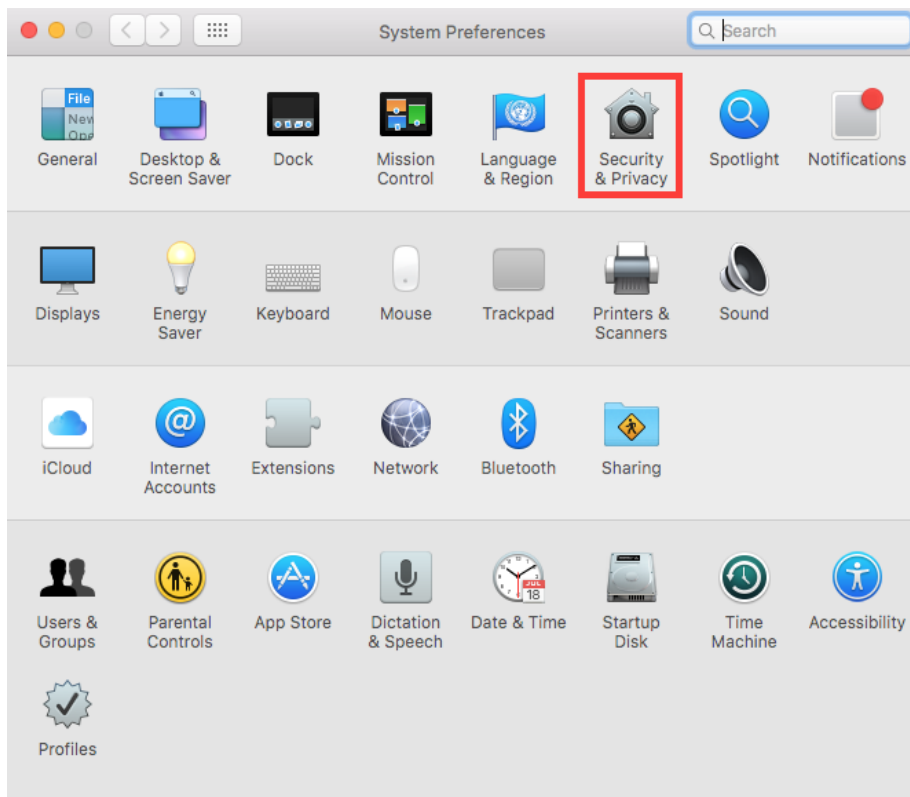
3. Once the file is downloaded, open Finder (the face icon), select “downloads” and click the Epson file you just downloaded:



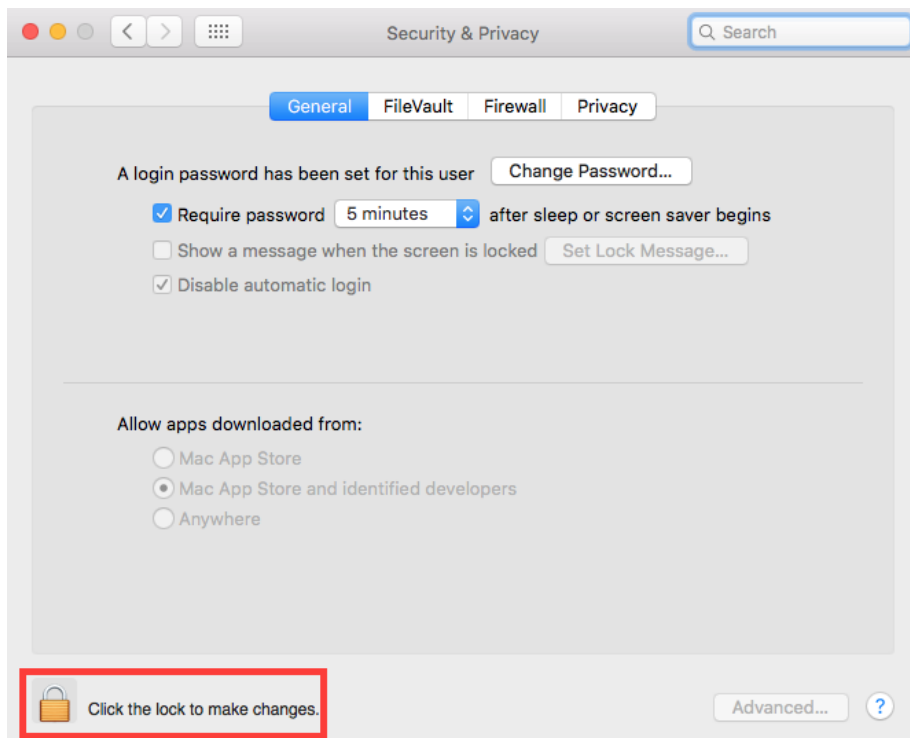
4. Run the setup process and follow all prompts to complete the setup wizard. You may need to “allow apps from unidentified developers.” If so, follow a-c below. If not, proceed to step 5.
 - a. Click the apple icon in the top right of the desktop, then select “system preferences”:



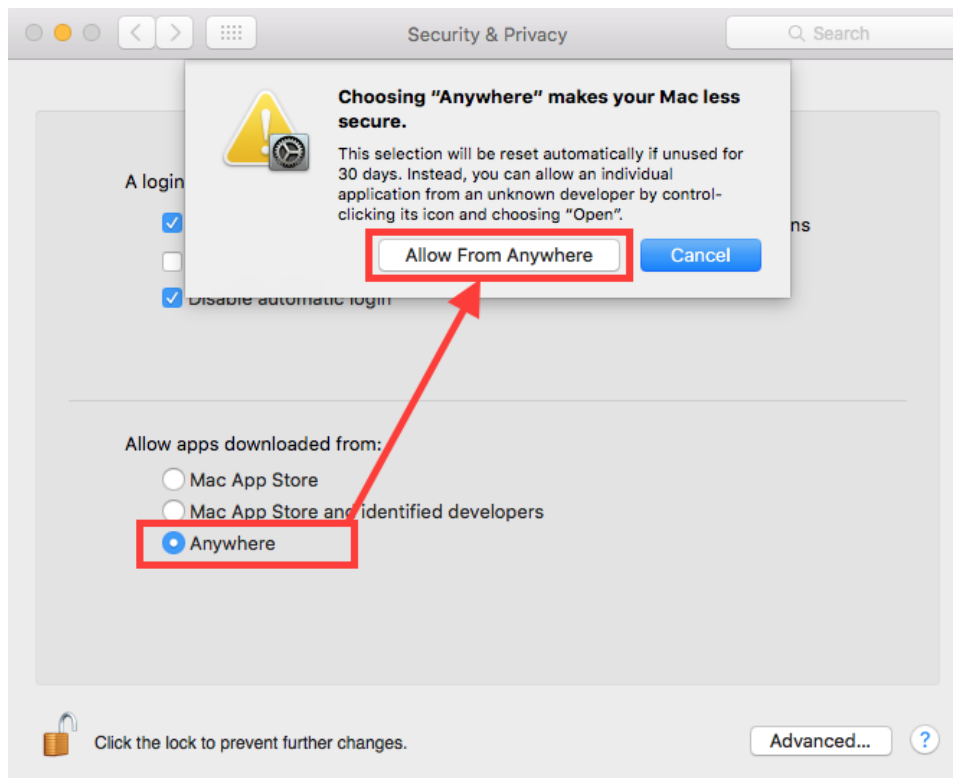
b. Select “security and privacy”:



c. Click the lock to make changes and put in your password:

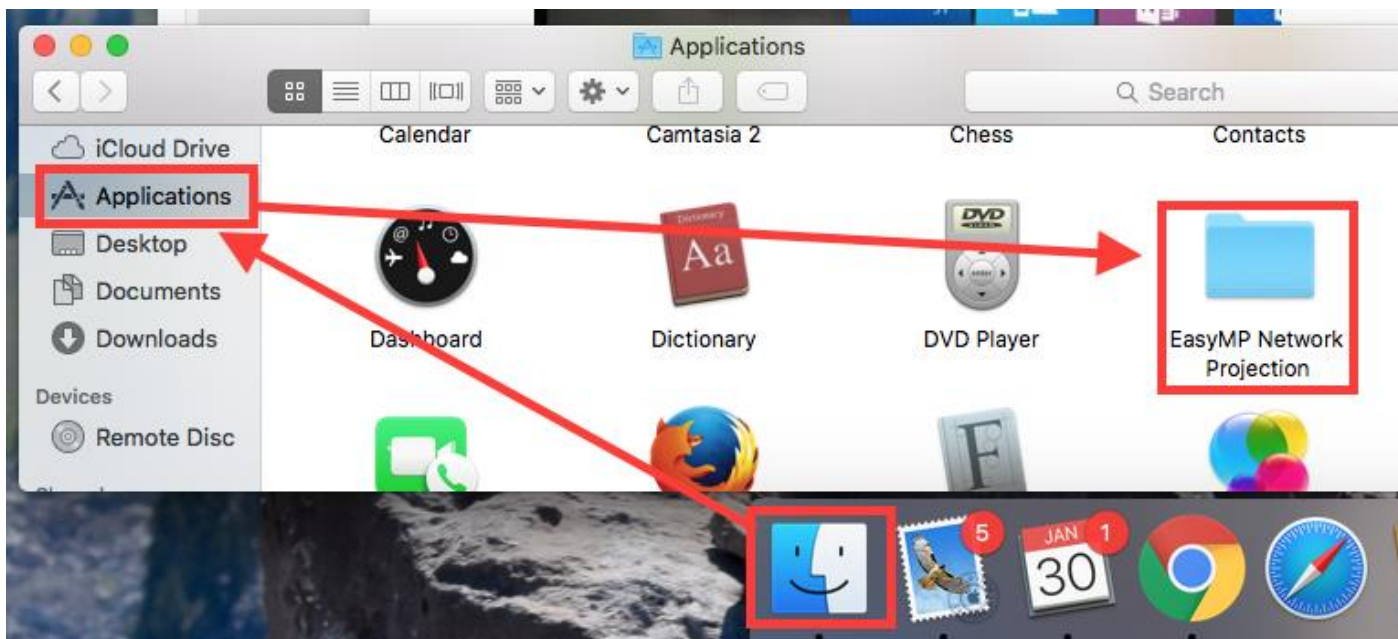


d. Select “anywhere” and click “allow from anywhere”:

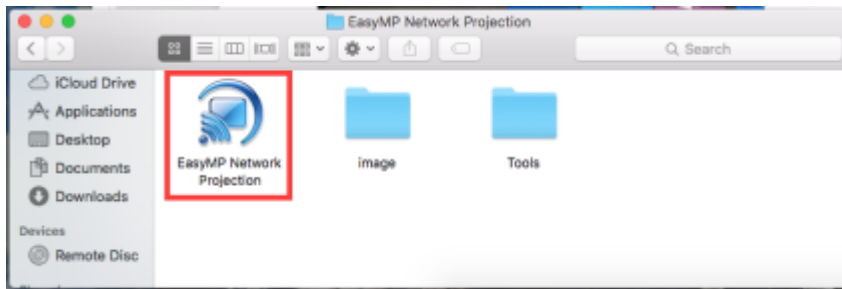


e. You may need to repeat steps 3-4 at this time if your installation does not begin automatically.

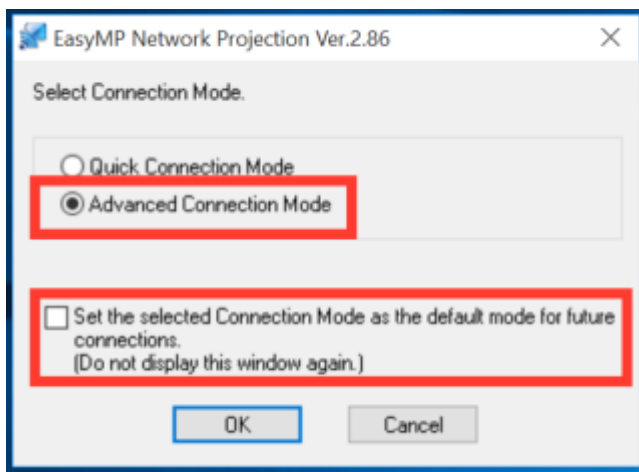
5. Click finder, open “applications,” and click “Epson Network Projection”:



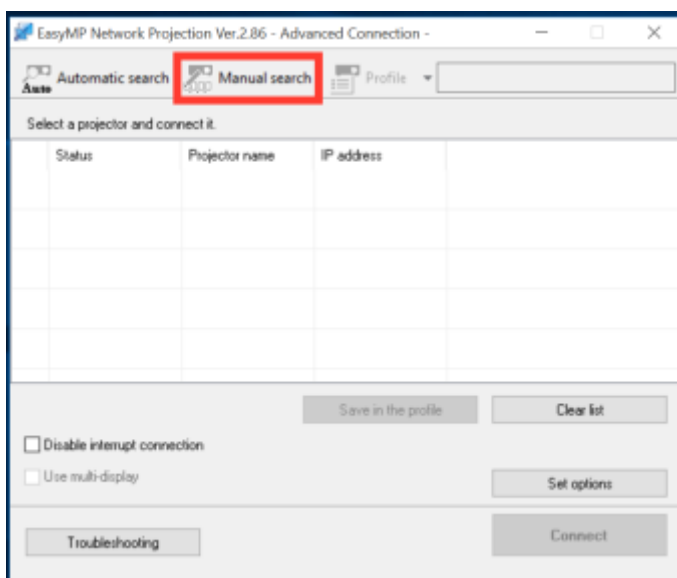
6. Click “Easy MP Network Projection”:



7. Select “Advanced Connection Mode” and check the box to “Set the selected connection mode as default...” and click “OK.”



8. Click “manual search” and then enter the IP address of the projector you wish to connect to. To find the IP address of a projector, turn on the projector and set it to “LAN” input. Many Carroll classrooms have “wireless” or “LAN” buttons on the control panels for the projectors. In the sandbox, the “LAN” input is labelled “video” on the wall panel.



9. Once the projector is added to your list, check the checkbox to the left of it and choose “connect”:

