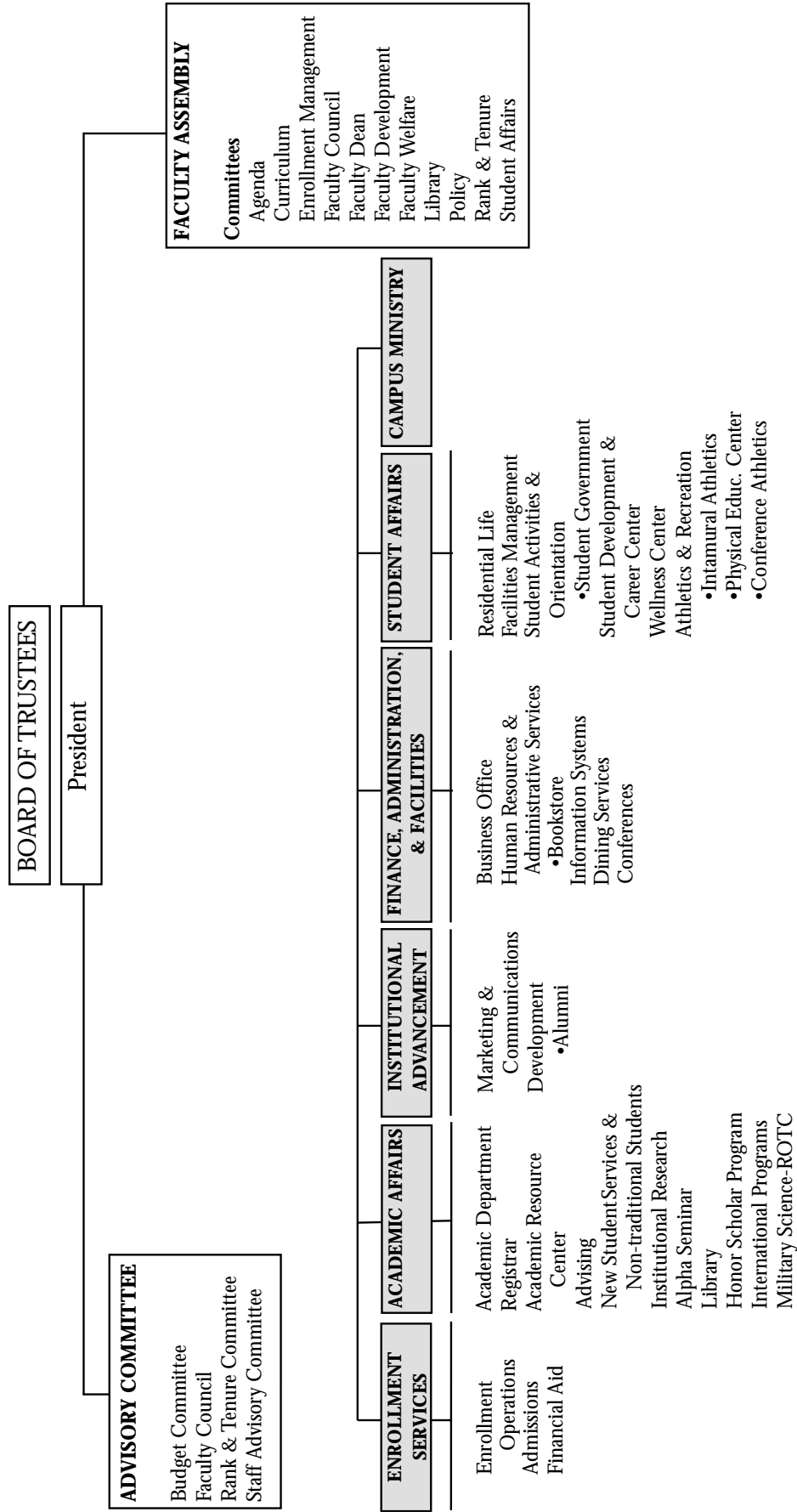


# ADMINISTRATIVE STRUCTURE



**ADVISORY COMMITTEE**  
 Budget Committee  
 Faculty Council  
 Rank & Tenure Committee  
 Staff Advisory Committee

**FACULTY ASSEMBLY**  
 Committees  
 Agenda  
 Curriculum  
 Enrollment Management  
 Faculty Council  
 Faculty Dean  
 Faculty Development  
 Faculty Welfare  
 Library  
 Policy  
 Rank & Tenure  
 Student Affairs

**ENROLLMENT SERVICES**  
 Enrollment  
 Operations  
 Admissions  
 Financial Aid

**ACADEMIC AFFAIRS**  
 Academic Department  
 Registrar  
 Academic Resource Center  
 Advising  
 New Student Services & Non-traditional Students  
 Institutional Research  
 Alpha Seminar  
 Library  
 Honor Scholar Program  
 International Programs  
 Military Science-ROTC

**INSTITUTIONAL ADVANCEMENT**  
 Marketing & Communications  
 Development  
 •Alumni

**FINANCE, ADMINISTRATION, & FACILITIES**  
 Business Office  
 Human Resources & Administrative Services  
 •Bookstore  
 Information Systems  
 Dining Services  
 Conferences

**STUDENT AFFAIRS**  
 Residential Life  
 Facilities Management  
 Student Activities & Orientation  
 •Student Government  
 Student Development & Career Center  
 Wellness Center  
 Athletics & Recreation  
 •Intamural Athletics  
 •Physical Educ. Center  
 •Conference Athletics

**CAMPUS MINISTRY**

**The Board of Trustees**

Eugene R. Croisant  
 Jerry E. Dernbach  
 Rev. William Greytak  
 John D. Haffey  
 Jerome Loendorf  
 Dr. Thomas C. Longin  
 Pat McCutcheon  
 John R. McInnis, Esq., Trustee Emeritus  
 Nancy Nicholson  
 Rev. Thomas M. O'Donnell  
 Msgr. Kevin S. O'Neill, Chair  
 Margaret E. Perryman, Vice Chair  
 Theresa Racicot  
 Msgr. Donald W. Shea  
 Sister Mary Kathleen Stefani, SCL  
 Robert E. Sullivan, Esq., Trustee Emeritus  
 Dr. Thomas Trebon

**The Presidents of Carroll College**

Rev. Stephen J. Sullivan	1910-1912
Rev. John L. McMullen	1912-1917
Rev. Peter F. MacDonald	1917-1919
Rev. John J. Tracy	1919-1920
Rt. Rev. Norbert C. Hoff	1920-1932
Rt. Rev. Emmet J. Riley	1932-1951
Rt. Rev. R. Vincent Kavanagh	1951-1957
Rt. Rev. Raymond G. Hunthausen	1957-1962
Rt. Rev. Anthony M. Brown	1962-1969
Rev. Joseph D. Harrington	1969-1974
Dr. Francis J. Kerins	1974-1989
Dr. Matthew J. Quinn	1989-2000
Rev. Stephen C. Rowan, Interim	2000-2001
Dr. Thomas Trebon	2001-

**The College Administration**

**Campus Ministry**

Rev. Robert Turner	Campus Ministry
Christine Perrier	Coordinator of Community Involvement

**Campus Food Service**

Mark Harrison	Manager of Sodexo
---------------	-------------------

**Office of Academic Affairs**

Dr. James Trudnowski	Vice President for Academic Affairs and Dean of the College
Shirley Baker	Director of International Programs
Mary Pat Dutton	Registrar
Lois Fitzpatrick	Director of the Library
Cindy Greiman	Director of New Student Services & Director of Advising
Kerry Jensen	Institutional Research
Joan Stottlemeyer	Director of Academic Resource Center

**Office of Finance, Administration, and Facilities**

Lynn C. Etchart	Vice President for Finance, Administration, and Facilities
Shanna Bushnell	Director of Campus Events
TBA	Director of Conferences
Renee Hill	Director of Human Resources & Administrative Services
Carol Kelly	Controller
Kitty Sullivan	Manager of the Bookstore
Patty White	Director of Campus Computing and Information Technology

**Office of Institutional Advancement**

Tom McCarvel	Vice President for Institutional Advancement
Gayle Agostinelli	Associate Director of Development-Annual Fund
TBA	Director of Development
Nancy Lee	Director of Marketing and Communications
Reneé Wall	Associate Director of Development for Alumni Relations

**Office of Enrollment Services**

Candace Cain	Dean of Enrollment Services
Michael Brown	Assistant Director of Admission
R. Tyler Eisbach	Assistant Director of Admission
TBA	Director of Financial Aid
Kim Harris	Admission Counselor
Brock Lowrance	Admission Counselor

John Rausch                    Outreach Admission Counselor  
 Telecounseling Supervisor

Janet Riis                      Interim Director of Financial Aid

Laurie Rodriguez            Assistant Director of Admission

Cynthia Thornquist          Director of Admission and  
 Enrollment Operations

**Office of The President**

Dr. Thomas Trebon          President of Carroll College

**Office of Student Life**

Dr. Jim Hardwick            Vice President for Student Life

Mary Ellen Earnhardt      Counselor

Luke Fortune                Director of Community Living

K. Mike Franklin            Director of Counseling and Interim  
 Director of Career Services

Patrick Harris                Director of Student Activities and  
 Leadership

Amy Heuiser                 Head Coach, Women's Volleyball

Mark Hiemenz                Head Coach, Women's Soccer

Christopher Holland        Community Hall Director

Steve Jones                 Facility Coordinator, PE Center

Bill Lannan                  Head Coach, Men's and Women's  
 Golf

TBA                             Community Hall Director

Shawn Nelson                Head Coach, Women's Basketball

Bruce Parker                Athletic Director

Joi Thomas                  Athletic Trainer

Kathleen Trudnowski        Director of Wellness Center

Gary Turcott                 Head Coach, Men's Basketball

Mike VanDiest              Head Coach, Football

Rosie Walsh                 Director of Career Services  
 (Sabbatical Fall 2003)

**Carroll College Faculty**

**PRESIDENT**

DR. THOMAS TREBON (2001)  
 Professor  
 B.A., 1965, Seattle University  
 M.A., 1970, University of Denver  
 Ph.D., 1980, University of Denver

**VICE PRESIDENT FOR ACADEMIC AFFAIRS**

JAMES A. TRUDNOWSKI (1968)  
 Professor of Mathematics  
 A.B., 1957, Carroll College  
 M.A.T., 1969, University of Montana  
 Ed.D., 1992, University of Montana

JOHN S. ADDIS (1985)  
 Professor of Biology  
 B.A., 1969, Northwestern University  
 Ph.D., 1977, University of Michigan

SAMUEL ALVEY (2001)  
 Assistant Professor of Biology  
 B.S., 1992, California Polytechnic State University,  
 San Luis Obispo  
 Ph.D., 1996, University of California, Riverside

KARLEEN ANDERSON (1996)  
 Assistant Professor of Nursing  
 B.S.N., 1969, Montana State University  
 M.N., 1990, Montana State University

SHIRLEY A. BAKER (1990, 1999)  
 Assistant Professor, International Programs  
 B.A., 1987, Carroll College  
 M.A., 1988, University of Kentucky, Lexington  
 M.A., 1989, US International University, San Diego

DEBRA BERNARDI (1997)  
 Associate Professor of English  
 A.B., Franklin & Marshall College  
 M.A., University of Wisconsin-Madison  
 Ph.D., University of Wisconsin-Madison

JACQUELINE E. BREHE (2000)  
 Associate Professor of Biology  
 B.S., 1969, Maritta College, Ohio  
 Ph.D., 1974, University of Missouri-Columbia

NATHALIE CAULLIEZ (1983)  
 Associate Professor of French  
 D.U.E.L., 1973, Facultes Catholiques  
 Licence, 1974, Universite de Lille, III  
 M.A., University of Montana

ELIZABETH CHUTE (2001)  
 Assistant Professor of Sociology  
 B.A., 1986, SUNY Stony Brook  
 M.A., 1989, SUNY Stony Brook  
 Ph.D., 1998, SUNY Stony Brook

KELLY CLINE (2003)  
 Assistant Professor of Mathematics  
 B.S., 1998, Eastern Oregon University  
 M.S., 2000, University of Colorado  
 Ph.D., 2003, University of Colorado at Boulder

KIM J. DeLONG (1989)  
 Assistant Professor of Fine Arts: Theatre  
 B.A., 1972, E. Washington University  
 M.F.A., 1974, Cornell University

CHARLES D. DRISCOLL (1993)  
 Associate Professor of Fine Arts: Theatre  
 B.A., 1978, Washington State University  
 M.F.A., 1994, University of Washington

CHARLES G. ERICKSEN, JR. (1992)  
 Professor of Accounting, Business, and Economics  
 B.S., 1974, Colorado State University  
 B.S., 1975, Colorado State University  
 M.A., 1978, Western State College  
 Ed.D., 1990, Montana State University  
 C.M.A.

- RALPH L. ESPOSITO (1978)**  
Professor of Fine Arts: Visual Arts  
B.F.A., 1973, University of Connecticut  
M.F.A., 1977, University of Puget Sound
- LAURI FAHLBERG (1997)**  
Associate Professor of Education and Physical Education  
B.S., 1979, University of Colorado, Boulder  
M.S., 1985, Montana State University  
Ed.D., 1993, University of Northern Colorado
- BARRY J. FERST (1980)**  
Professor of Philosophy  
A.B. (L.A.S.), 1968, University of Illinois  
M.A., 1969, Kansas State University  
Ph.D., 1976, Tulane University
- LOIS A. FITZPATRICK (1976)**  
Professor and Library Director  
B.S., 1973, Mercy College  
M.L.S., 1975, Pratt Institute
- JOHN MURPHY FOX (1997)**  
Assistant Professor of Sociology and Languages and Literature  
B.A., 1975, California State College  
M.A., 1977, University of Utah
- EUGENE C. FRANKS (1968)**  
Professor of Accounting, Business, and Economics  
B.S., 1964, Montana State University  
M.S., 1968, Montana State University
- KIM GARRISON (1996)**  
Assistant Professor of Nursing  
A.D., 1978, Northern Montana College  
B.S.N., 1980, Montana State University  
M.N., 1984, University of Washington
- JUDITH GEDROSE (1995)**  
Assistant Professor of Nursing  
Diploma in Nursing, 1967, Columbus Hospital  
B.S.N., 1976, Montana State University  
M.A.N., 1978, Montana State University
- JENNIFER GEIGER (2003)**  
Assistant Professor of Biology  
B.S., 1997, Boise State University  
Ph.D., 2003, University of Colorado
- LOREN GRAHAM (2001)**  
Assistant Professor of English  
B.M., 1980, Oklahoma Baptist  
B.A., 1981, Oklahoma Baptist  
M.A., 1986, Baylor University  
M.F.A., 1988, University of Virginia
- TOMAS L. GRAMAN (1988)**  
Professor of Spanish  
B.A., 1973, University of Illinois  
M.A., 1979, University of Utah  
Ph.D., 1984, University of New Mexico
- DONNA GREENWOOD (1981, 1986)**  
Associate Professor of Nursing  
B.S., 1973, Montana State University  
M.S.N., 1981, University of Portland
- CYNTHIA GUSTAFSON (1997)**  
Associate Professor of Nursing  
B.A., 1977, Gustavus Adolphus College  
M.S., 1983, University of Minnesota  
Ph.D., 1998, University of Michigan
- DARRELL HAGEN (1986, 1997)**  
Associate Professor of Computer Science  
B.A., 1968, University of Montana  
M.A., 1971, Colorado State University
- THOMAS W. HAMILTON (1972)**  
Associate Professor of Psychology  
B.A., 1968, Seattle University  
M.S., 1971, Portland State University
- R. STEPHEN HARPER (1988)**  
Associate Professor of Computer Science  
B.A., 1973, Rocky Mountain College  
M.S., 1988, University of Denver
- JOHN W. HART (1985)**  
Professor of Theology  
B.A., 1966, Marist College  
S.T.M., 1972, Union Theological Seminary  
M.Phil., 1976, Union Theological Seminary  
Ph.D., 1978, Union Theological Seminary
- D. GRANT HOKIT (1996)**  
Professor of Biology  
B.S., 1986, Colorado State University  
Ph.D., 1994, Oregon State University
- CHARLOTTE M. JONES (1993)**  
Associate Professor of Communication Studies  
B.A., 1983, University of Montana  
M.A., 1988, San Diego State University  
Ph.D., 1994, University of Texas-Austin
- MARY E. KEEFE (1997)**  
Associate Professor of Mathematics, Engineering & Physics  
B.S., 1984, University of Notre Dame  
M.S., 1987, Cornell University  
Ph. D., 1994, Cornell University
- RICHARD T. LAMBERT (1970)**  
Professor of Philosophy  
B.A., 1965, St. Bernard's College  
Ph.D., 1971, University of Notre Dame
- GLORIA J. LAMBERTZ (1987)**  
Associate Professor of Physical Education  
B.S., 1979, Mayville State College  
M.S., 1981, Montana State University  
Ed.D., 1998, Montana State University
- REV. JEREMIAH LOWNY (1992)**  
Associate Professor of Sociology  
B.A., 1972, San Diego State University  
M.A., 1973, San Diego State University  
M.Div., 1988, Catholic University of America  
Ph.D., 1976, University of Kentucky
- BELLE MARIE (1992)**  
Associate Professor of Accounting, Business, and Economics  
B.S., 1982, University of Montana  
M.B.A., 1988, University of Montana  
C.P.A., C.M.A., C.I.A.

- JONATHAN C. MATTHEWS ( 1998)  
Associate Professor of Education  
B.A., 1980, University of California, Los Angeles  
Ph.D., 1994, Stanford University
- LINDA M. MACCAMMON (1999)  
Assistant Professor of Theology  
B.A., 1989, LeMoyne College  
M.A., 1992, Yale Divinity School  
Ph.D., 1998, Boston College, Weston Jesuit School of Theology
- DAVID MESSENGER (2001)  
Assistant Professor of History  
B.A., 1993 McGill University  
M.A., 1994 University of Toronto  
Ph.D., 2000 University of Toronto
- ANNETTE MORAN, C.S.J. (1995)  
Associate Professor of Theology  
B.A., 1969, Fontbonne College  
M.A., 1975, Ohio State University  
M.A., 1985, St. John's University  
Ph.D., 1994, Graduate Theological Union
- JEFFREY B. MORRIS (1994)  
Associate Professor of English  
B.A., 1985, Boise State University  
M.A., 1988, Pennsylvania State University  
Ph.D., 1993, Pennsylvania State University
- TERENCE J. MULLEN (1983)  
Associate Professor of Mathematics, Engineering, and Physics  
B.A., 1980, Carroll College  
M.S., 1982, Columbia University  
P.E., 1989
- JOSEPH W. MUNZENRIDER (1965)  
Professor of Fine Arts: Music  
B.Mus., 1962, University of Montana  
M.Mus., 1963, University of Michigan  
A.A.G.O., 1961, University of Regents of New York State
- KEVIN D. NIELSEN (2000)  
Assistant Professor of Mathematics & Engineering  
B.S., 1983, Utah State University  
M.S., 1986, Utah State University  
Ph. D., 2000, University of Iowa
- BRENT NORTHUP (1989)  
Associate Professor of Communication Studies  
Director of Forensics  
B.A., 1968, Whitman College  
M.A., 1976, University of Missouri-Columbia
- JACK E. OBERWEISER, JR. (1993)  
Associate Professor of Mathematics  
B.A., 1971, Carroll College  
M.A.T., 1985, University of Montana
- MARK R. PARKER (2000)  
Associate Professor of Mathematics  
B. A., 1984, University of Colorado  
M.S., 1992, University of Colorado  
Ph. D., 1995, University of Colorado
- REV. J. EUGENE PEOPLES (1966)  
Professor of Theology  
A.B., 1962, Carroll College  
M.A., 1965, Mt. St. Bernard Seminary  
Ph.D., 1970, Aquinas Institute
- ANNE PERKINS (1990)  
Associate Professor of Psychology  
B.S., 1975, University of California-Davis  
M.S., 1982, Montana State University  
Ph.D., 1991, University of California-Davis
- LYNN L. PETERSEN (1999)  
Associate Professor of Music  
B.S., 1984, Dr. Martin Luther College  
M.C.M., 1986, Concordia College  
Ph.D., 1989, University of Minnesota
- ERIK K. PRATT (1990)  
Associate Professor of Political Science  
B.A., 1976, California State University-Fullerton  
M.A., 1979, California State University-Fullerton  
Ph.D., 1989, University of California-Riverside
- ALEXIS J. RINCÓN (1995)  
Assistant Professor of Spanish  
B.A., 1981, University of Utah  
M.S., 1985, University of Utah
- PHILIP B. ROSE (1982)  
Professor of Computer Science and Mathematics  
B.A., 1963, Kalamazoo College  
M.A., 1966, University of Colorado  
M.Sc., 1987, Oxford University
- JOHN SALZSIEDER (1997)  
Professor of Chemistry  
B.S., 1969, North Dakota State University  
Ph.D., 1975, North Dakota State University
- KAY A. SATRE (1992)  
Associate Professor of English  
B.A., 1978, Carroll College  
M.A., 1981, Boston College  
Ph.D., 1998, University of Massachusetts at Amherst
- JOHN L. SCHARF (1976, 1988)  
Professor of Mathematics and Engineering  
B.A., 1973, Carroll College  
M.S., 1975, Columbia University  
Ph.D., 1990, University of Notre Dame
- MARILYN S. SCHENDEL (1992)  
Associate Professor of Biology and Chemistry  
B.A., 1971, University of California-Berkeley  
Ph.D., 1976, University of Wisconsin
- REV. DANIEL SHEA (1996)  
Associate Professor of Languages  
A.B., 1965, Carroll College  
M.Div., 1971, Sulpician Seminary  
M.Ed., 1976 Montana State University  
Ph.D., 1984, Boston College

GERALD SHIELDS (1999)

James J. Manion Endowed Chair of Biology

B.A., 1966, Carroll College

M.A., 1970, Central Washington State College

Ph.D., 1974, University of Toronto

WILLIAM MARK SMILLIE (1995)

Associate Professor of Philosophy

B.A., 1983, Thomas Aquinas College

Ph.D., 1992, University of Notre Dame

ROBERT J. STANSBERRY (2001)

Assistant Professor of Special Education

B.A., 1971 Newberry College

M.A., 1976 Ball State University

Ed.S., 1982 Georgia State University

Ed.D., 1989 University of Georgia

RONALD S. STOTTLEMYER (1984)

Professor of English

B.A., 1965, University of Tennessee

M.A., 1967, University of Tennessee

Ph.D., 1983, University of Arizona

KYLE S. STRODE (2000)

Assistant Professor of Chemistry

B.A., 1986, Manchester College

Ph.D., 1993, Montana State University

REV. JEREMIAH T. SULLIVAN (1963)

Associate Professor of History

A.B., 1959, Carroll College

S.T.B., 1961, Gregorian University

S.T.L., 1963, Gregorian University

M.A., 1970, St. Louis University

ROBERT R. SWARTOUT, JR. (1978)

Professor of History

B.S., 1969, Portland State University

M.A., 1974, Portland State University

Ph.D., 1978, Washington State University

ANTHONY M. SZPILKA (1993)

Associate Professor of Mathematics, Engineering, and Physics

B.S., 1979, Princeton University

M.S., 1983, Cornell University

Ph.D., 1985, Cornell University

RODERICK M. THRONSON (1987)

Professor of Education

B.S., 1971, Montana State University

M.Ed., 1979, Montana State University

Ed.D., 1984, Montana State University

JOCELYNN R. WALDRON (2000)

Assistant Professor of Nursing

B.S., 1977, Sam Houston State University

B.A., 1992, Carroll College

M.N., 1996, Montana State University

DENNIS E. WIEDMANN (1971)

Professor of Political Science

A.B., 1966, California State University

M.A., 1968, University of California

RON L. WILDE (1997)

Associate Professor of Chemistry

B.S., 1973, South Dakota State University

M.S., 1975, South Dakota State University

Ph.D., 1984, Colorado State University

BETHALEE J. WILSON (1987)

Associate Professor of Accounting, Business, and Economics

B.S., 1972, Central Michigan University

M.A., 1974, Central Michigan University

M.S., 1978, Central Michigan University

M.B.A., 1984, University of Montana

PHILIP M. WITTMAN (1982)

Professor of Political Science

B.A., 1972, University of San Francisco

M.A., 1976, Claremont Graduate School

Ph.D., 1980, Claremont Graduate School

HOLLY ZULLO (2000)

Assistant Professor of Mathematics

B.S., 1991, Rensselaer Polytechnic Institute

M.S., 1993, University of Colorado

Ph.D., 1995, University of Colorado

LYNETTE Z. ZUROFF (1981)

Professor of Education

B.A., 1970, Carroll College

M.Ed., 1978, Montana State University

Ed.D., 1982, Montana State University

#### Professors Emeriti

GUIDO BUGNI, Natural Sciences

HANK BURGESS, Languages and Literature

DR. JOHN CHRISTENSON, Biology

REV. WILLIAM GREYTAK, History

MSGR. JOSEPH HARRINGTON, Natural Sciences

DR. JOHN E. SEMMENS, Languages and Literature

DR. HARRY SMITH, Communication

DR. JEAN SMITH, Natural Sciences

DR. ART WESTWELL, Natural Sciences