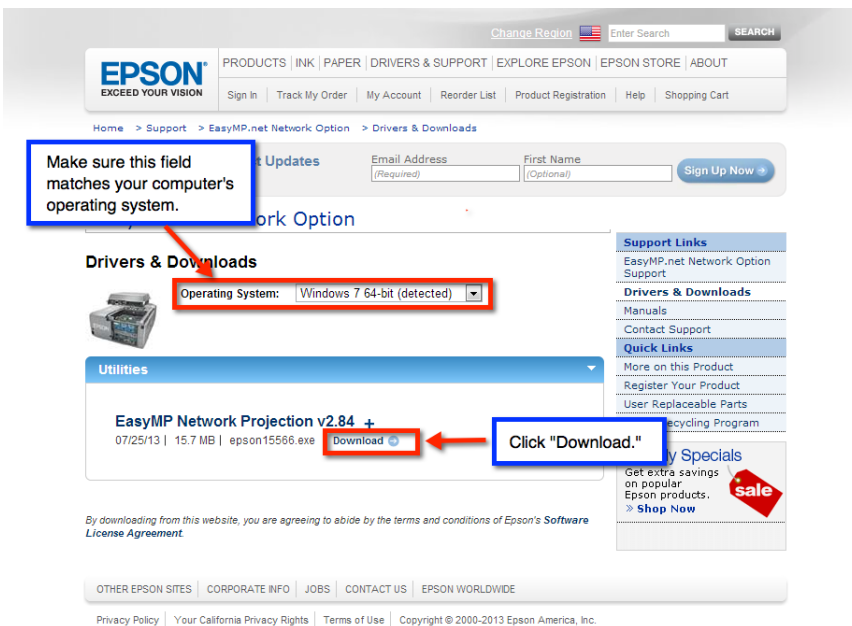
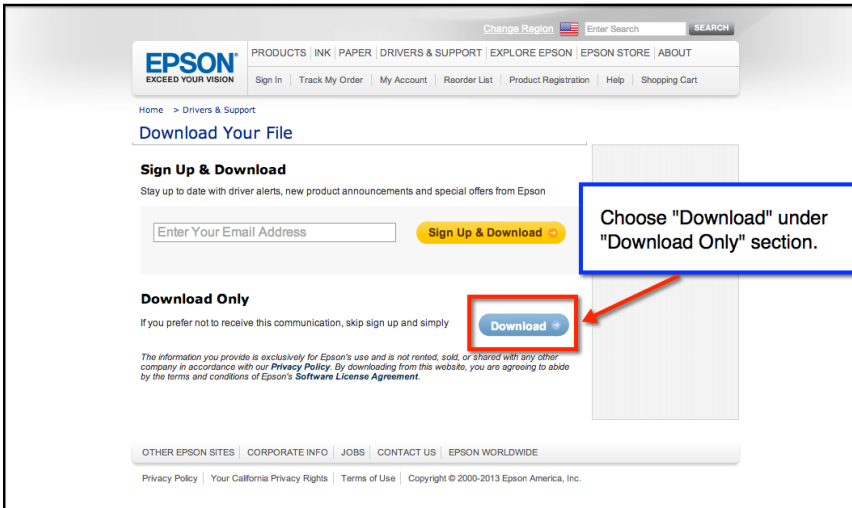


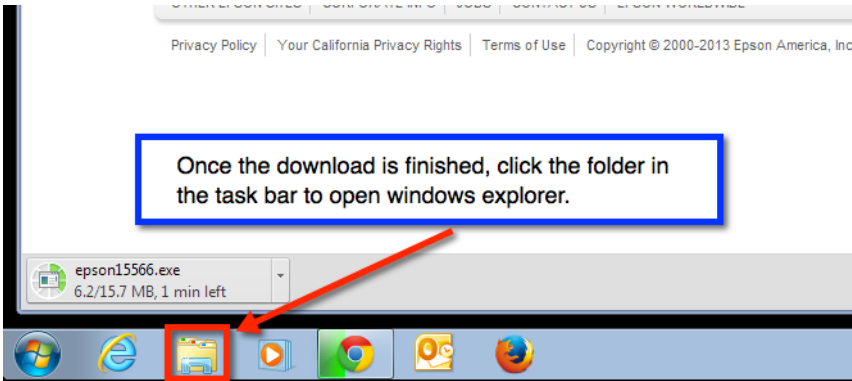
1. Use a web browser to search for "Epson Easy MP"
2. Follow the link for "Epson EasyMP.net Network Option Board"



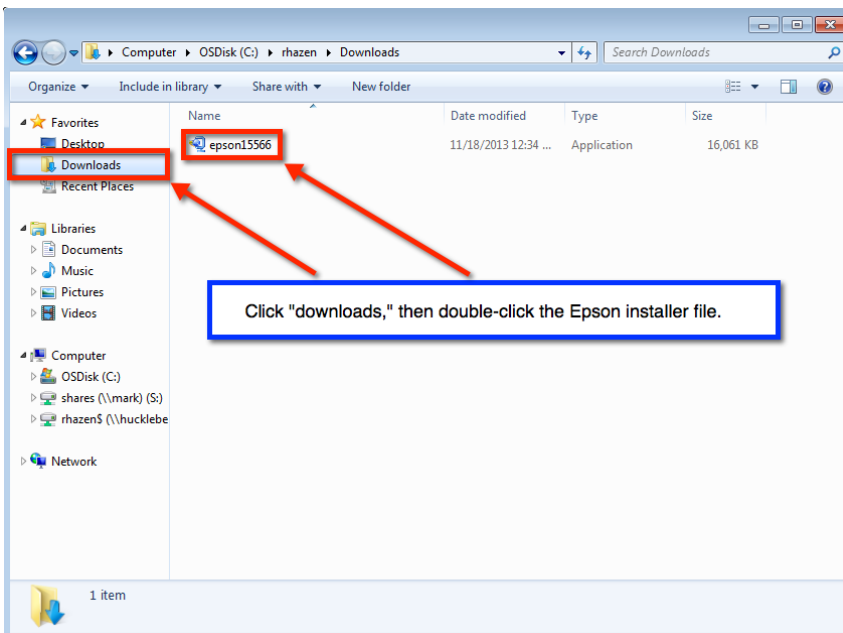
3. The website should detect your operating system automatically. Only Windows and Mac computers are supported at this time. iPads, Chromebooks, and Surfaces are not able to use this feature.
4. Click "Download" to begin downloading.



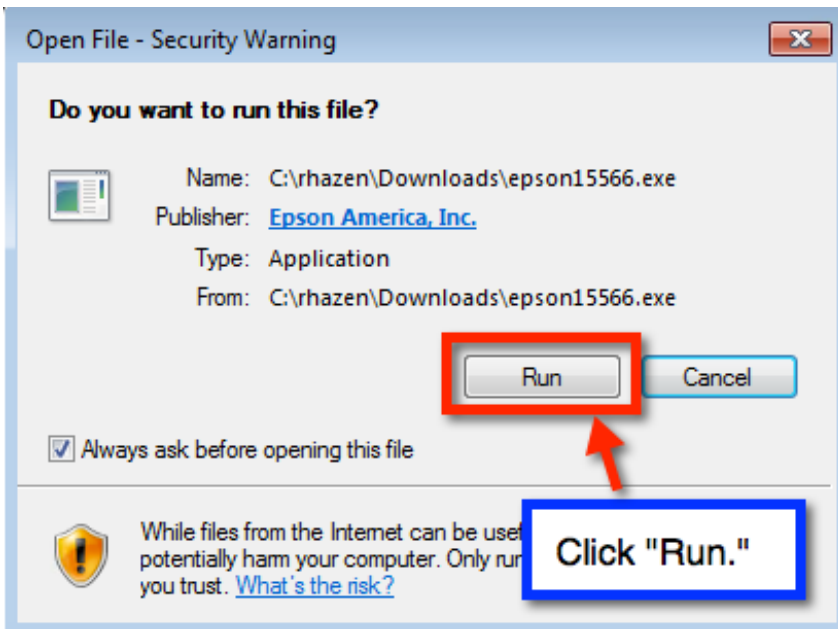
5. Choose "Download" in the "Download Only" section. You do not have to put in your email address for this step.



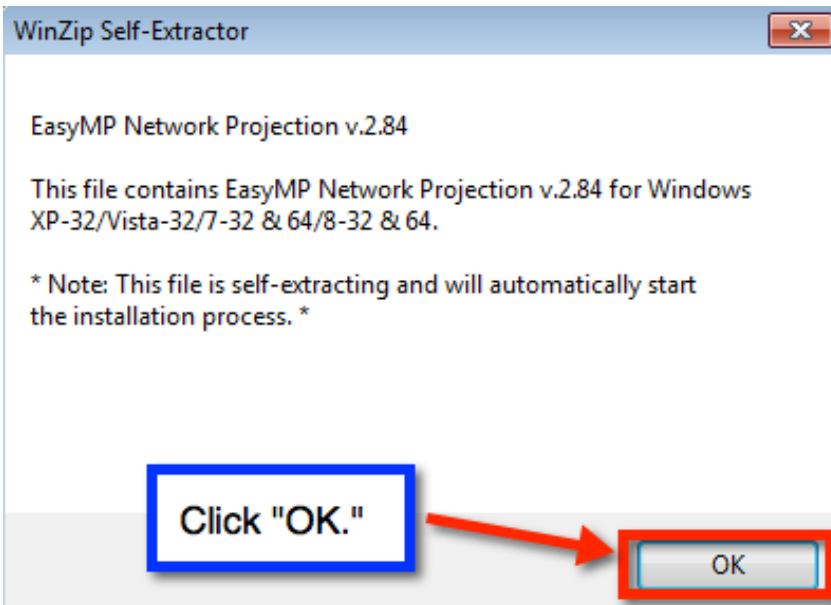
6. Open Windows Explorer by clicking the file icon in the bottom left section of the screen.



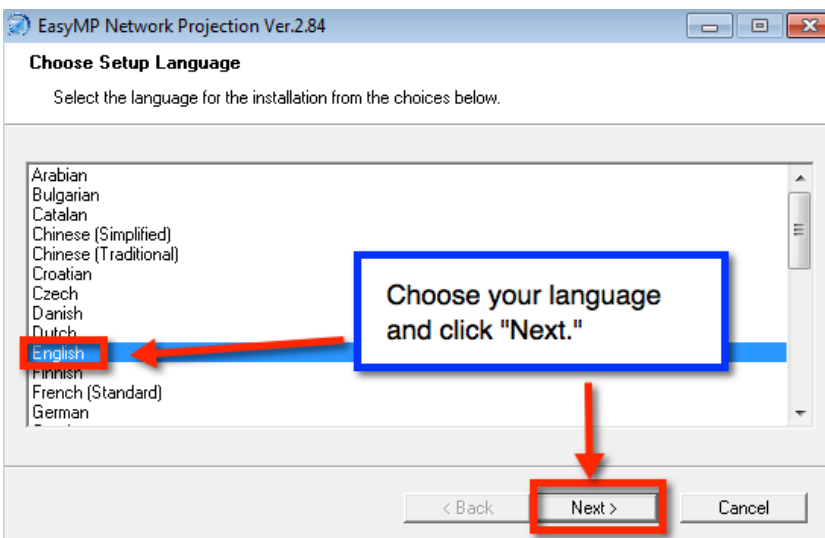
7. Click "Downloads," then select the Epson installer file in your downloads.



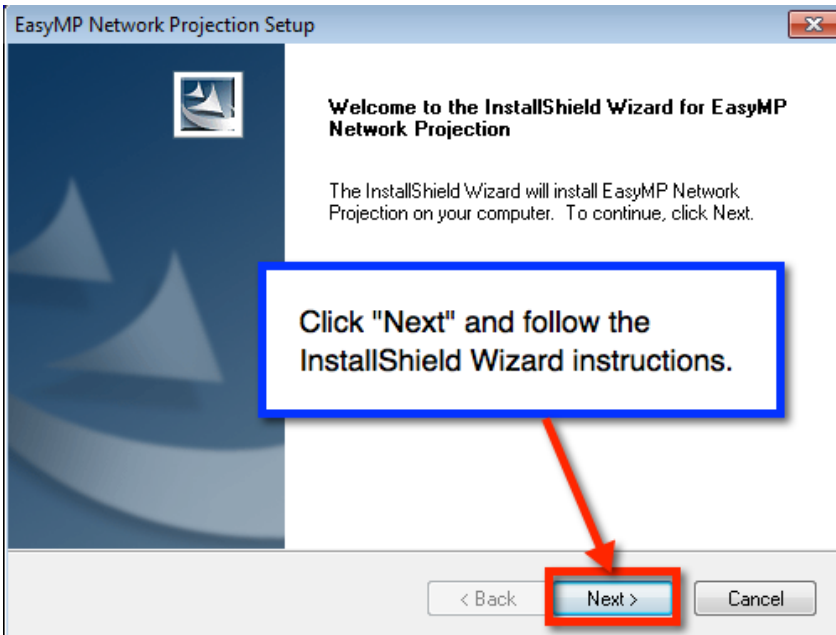
8. Run the installation program.



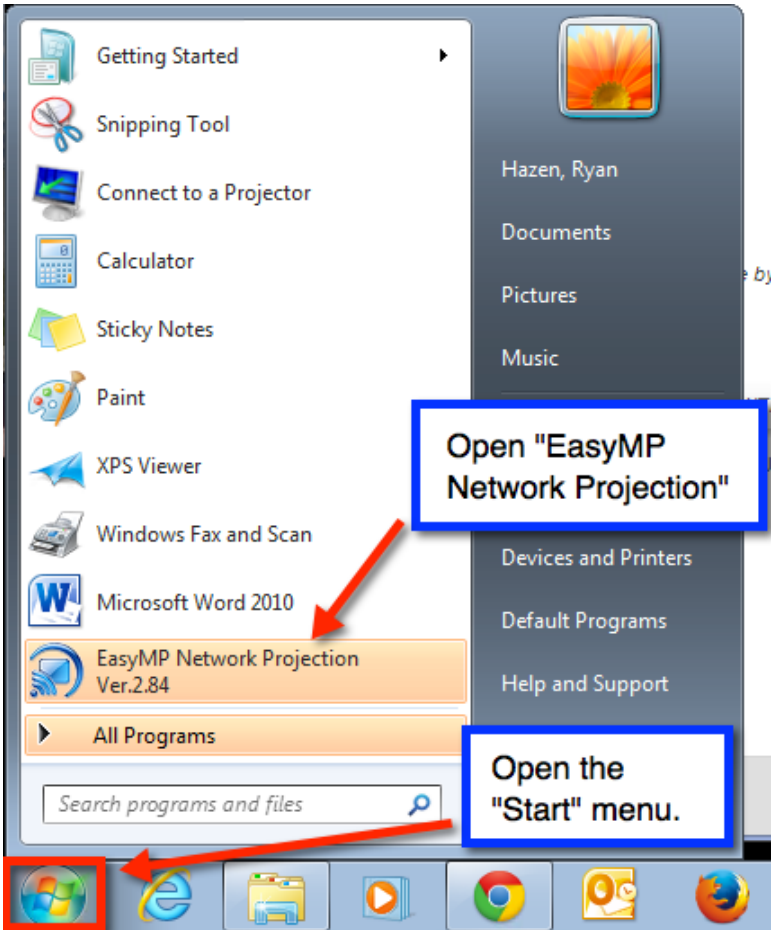
9. Click "OK"



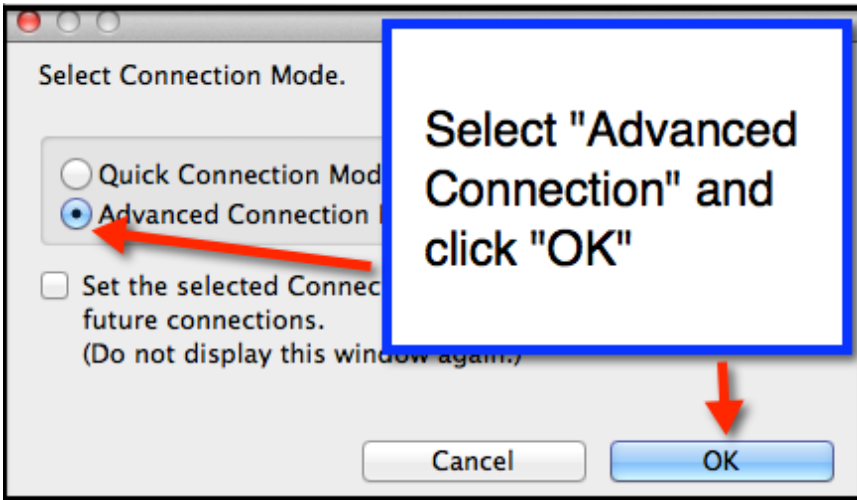
11. Choose your language and click "Next."



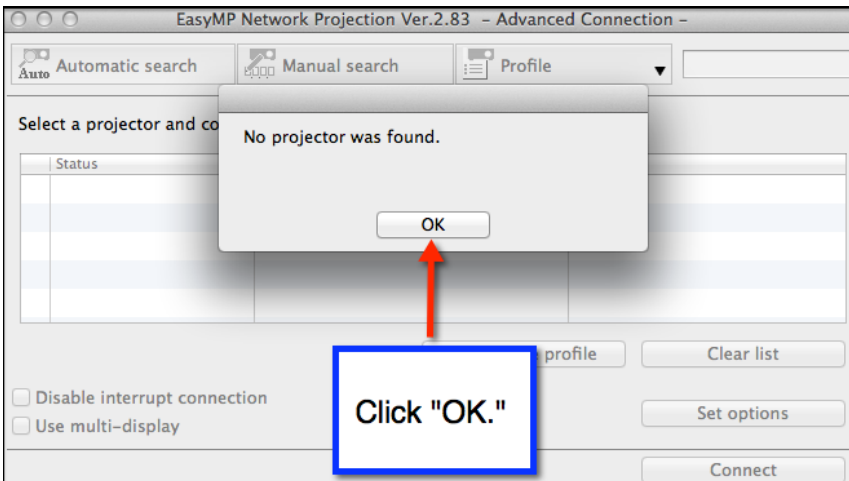
12. Click "Next" and follow the instructions of the InstallShield Wizard.



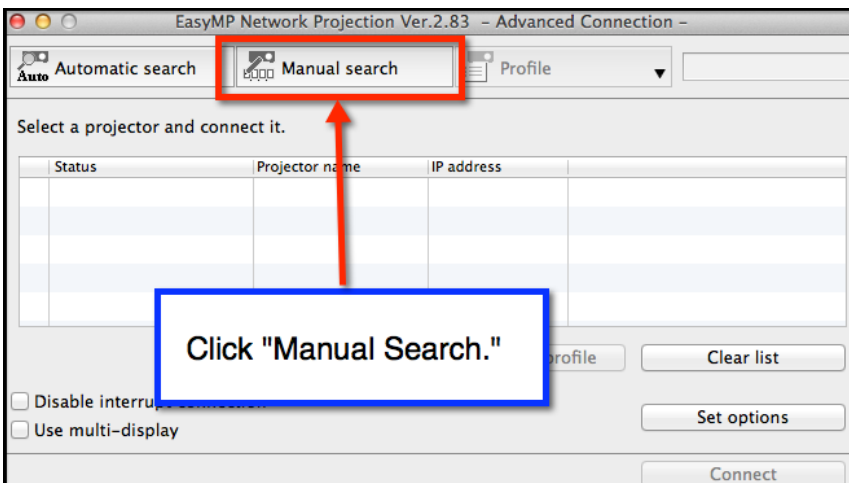
13. Once the IntallShield Wizard has finished, click the "Start" button in the bottom left corner of the screen, then open "EasyMP Network Projection."



14. Select "Advanced Connection" and click "OK."



15. Easy MP will give you a message that no projector was found. This is normal. Just click "OK."



16. Click "Manual Search" in EasyMP.

Turn on the display you'd like to use.

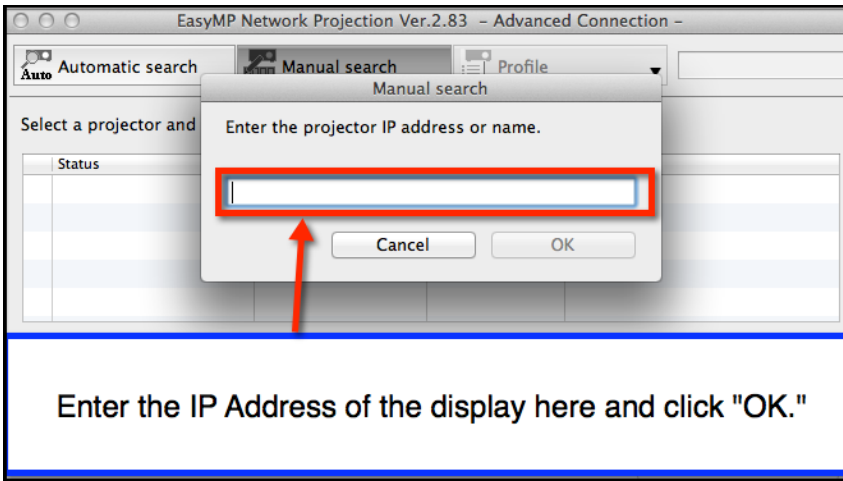


17. Locate the Extron switch for the display you are using. It should be located in the cabinet next to the display.
18. Turn on the display using the "ON" button.
19. Make sure the "Video" button is selected on the Extron switch.
20. Look at the display you plan to use and make note of the IP Address and Keyword displayed there. You will need these in coming steps.

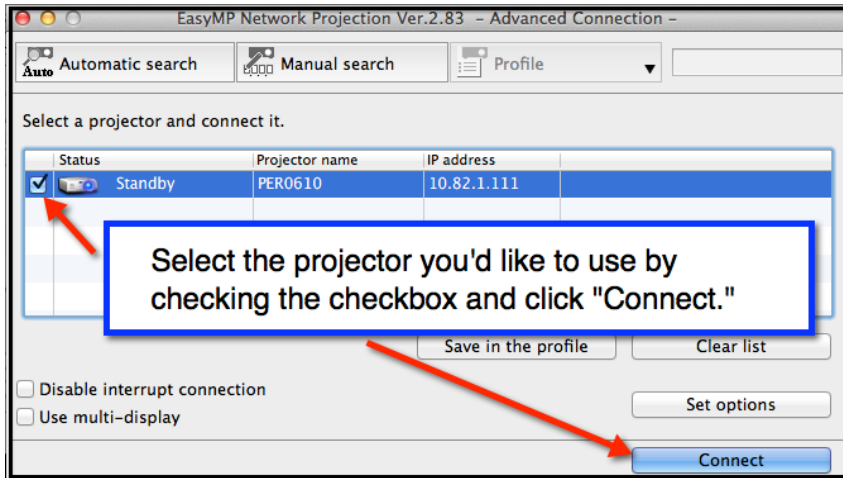
The screen will display this information. Make note of the IP address and keyword. You will need these in the next step.

[LAN]

Projector Name	:	PER0609
IP Address	:	010.082.001.112
Keyword	:	3606



21. Enter the IP address for the display you plan to use in the dialog box on your computer.



22. Check the Checkbox next to the projector you would like to use and click "Connect." Enter the keyword from the display, then use the control panel to control when you are sharing your screen.

